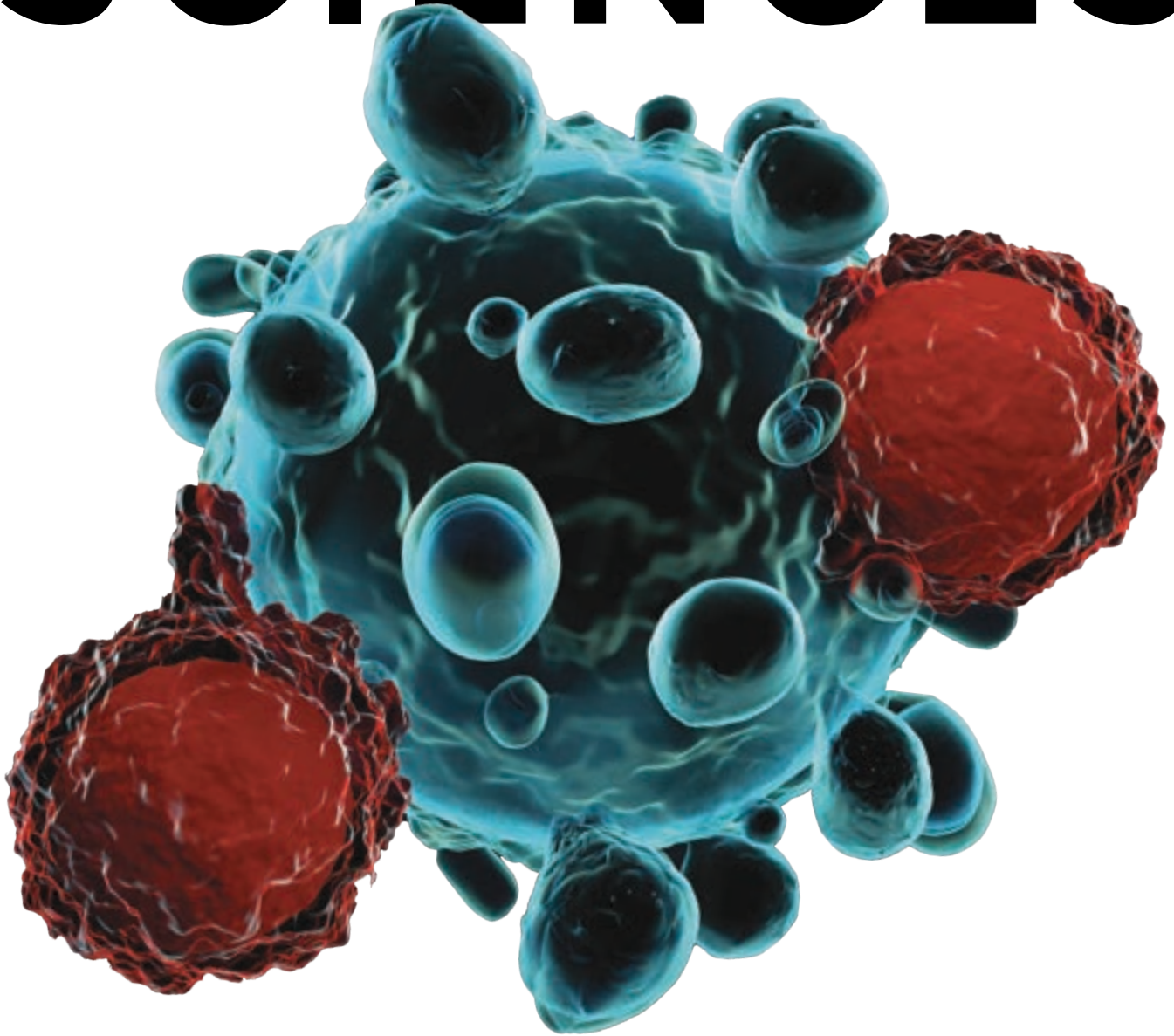


# LIFE IN FREDERICK COUNTY, MARYLAND

# SCIENCES



# FREDERICK COUNTY

*Frederick County, Maryland is an ideal location for any company looking to start, locate or expand.*

As the Northern anchor of the I-270 Technology Corridor, Frederick County is located within a one-hour drive of two metropolitan cities: Washington, DC and Baltimore, MD. This proximity offers direct access to federal government agencies, national labs and one of the largest clusters of life sciences companies in the Country.

The Frederick County Office of Economic Development offers resources and support for new and established businesses in the life sciences industry, an expedited permitting process and staff experienced in life sciences and managing large projects throughout the entire development process. Frederick County Workforce Services staff provide hiring tools and training opportunities.

With over

**130**  
**COMPANIES**

Life Sciences is Frederick County's largest growing cluster. International leaders such as **Kite a Gilead Company, Thermo Fisher Scientific, AstraZeneca, and Lonza** call Frederick County home.

Major employers continue to grow, adding jobs and expanding square footage, including **Frederick Health, Leidos Biomedical, the Frederick National Laboratory for Cancer Research** and **Fort Detrick** which has a

**\$12B**  
**ECONOMIC IMPACT**

to the State of Maryland.

The life sciences ecosystem within Frederick County is extensive and thriving and provides resources and opportunities to support businesses from inception through commercial manufacturing and distribution. Frederick County provides incubation, acceleration, speed to market permitting processes, a favorable business climate including incentives and tax savings and dedicated sites suitable for research and development and commercial manufacturing operations.

Frederick County has real estate assets, talent and resources available for any company looking to locate or expand in the region.

ON THE COVER

## Chimeric antigen receptor (CAR) T-cell

CAR T-cell therapy allows immune cells called T cells (a type of white blood cell) to fight cancer by modifying them in the lab so they can find and destroy cancer cells. With a strong cluster of gene and cell therapy companies and one of the largest cell therapy manufacturing sites, Frederick County is on the leading edge of gene therapy.

**Frederick County boasts a strategic location with easy access to a comprehensive transportation network including highway, airport, rail and port resources.**

Three major international airports are located an hour from Frederick County: Baltimore-Washington International, Ronald Reagan National and Dulles International. Locally, Frederick Municipal Airport provides business and corporate air service and is the 2nd most active airport in the state.



**Universities and Colleges**

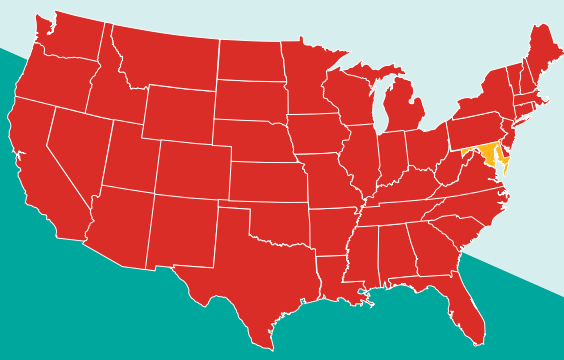
- 1 Frederick Community College
- 2 Hood College
- 3 Mount Saint Mary's University
- 4 Johns Hopkins University
- 5 The University of Maryland

**Federal Agencies**

- A Fort Detrick
- B National Cancer Institute
- C National Institutes of Health (NIH)
- D Food and Drug Administration (FDA)
- E U.S. Department of Agriculture (USDA)

**Rail Key**

- Brunswick Line
- Camden Line
- Penn Line
- ◆ Washington Metrorail
- ▲ Amtrak Station



# MAJOR LIFE SCIENCES EMPLOYERS

COMPANY NAME	DESCRIPTION	# OF EMPLOYEES
<b>Leidos Biomedical Research / Frederick National Laboratory for Cancer Research</b>	The laboratory's mission is to provide a unique national resource for the rapid development of new technologies to address some of the most urgent and demanding problems in the biomedical sciences, including cancer, ongoing unmet challenges in HIV/AIDS, and threats of emerging infectious diseases. Leidos Biomedical Research brings innovative approaches to genetics, genomics, protein science, proteomics, high-performance biomedical computing, virology, immunology, and clinical operations to enable this mission.	>2400
<b>Thermo Fisher Scientific</b>	Thermo Fisher Scientific Inc. is the world leader in serving science, with annual revenue of over \$40 billion. Our Mission is to enable our customers to make the world healthier, cleaner and safer. Whether our customers are accelerating life sciences research, solving complex analytical challenges, increasing productivity in their laboratories, improving patient health through diagnostics or the development and manufacture of life-changing therapies, we are here to support them. Our global team delivers an unrivaled combination of innovative technologies, purchasing convenience and pharmaceutical services through our industry-leading brands, including Thermo Scientific, Applied Biosystems, Invitrogen, Fisher Scientific, Unity Lab Services, Patheon and PPD.	>750
<b>AstraZeneca</b>	AstraZeneca's Frederick Manufacturing Center is one of 28 manufacturing sites across 16 countries that creates life-changing medicines for people around the world. Multiple products are manufactured at their facility in Frederick to treat cancer, autoimmune diseases and respiratory problems.	>700
<b>Kite, a Gilead Company</b>	Kite has been at the forefront of cancer immunotherapy since 2009. Today, they are a leader in engineered T cell therapy, which has changed the paradigm of cancer treatment as one of the biggest breakthroughs in medicine since the introduction of combination chemotherapy more than 60 years ago.	>500
<b>Lonza</b>	Lonza enables a healthier world by supporting their healthcare customers on the path to commercialization across the pharma, biotech and nutrition markets. By combining technological insight with world-class manufacturing, they help their customers to deliver new and innovative medicines that help treat a wide range of diseases.	>500
<b>Battelle</b>	Battelle is the largest independent nonprofit applied science and technology organization in the world. They support a diverse spectrum of clients, from small start-up companies to multinational corporations and government agencies.	>180
<b>Precision for Medicine</b>	Precision for Medicine is the first global, precision-medicine, clinical research organization. Purpose-built to shift the development curve for life sciences clients, they incorporate laboratory expertise, clinical trial excellence, and advanced data sciences at every stage. Known as Precision Convergence, this integrated approach enables them to deliver critical insights into patient biology from early development through approval. The result: More predictable trial outcomes, accelerated clinical development, and new life-changing treatments for the patients around the globe.	>175
<b>QIAGEN</b>	QIAGEN serves more than 500,000 customers around the globe, all seeking answers from the building blocks of life - DNA, RNA and proteins. They deliver Sample to Insight solutions for molecular testing, propelling customers from start to finish to unlock new insights.	>100
<b>Emmes</b>	Emmes is a global full service clinical research organization dedicated to supporting the advancement of public health and biopharmaceutical innovation. Founded in 1977, Emmes has conducted over 2000 clinical studies across a broad range of therapeutic areas, with significant expertise in infectious diseases, vaccines, ophthalmology, oncology, neurology, substance use disorders, and maternal and child health.	>90
<b>StageBio</b>	StageBio is a leading provider of GLP-compliant necropsy, histology, pathology, and specimen archiving services for the biopharmaceutical, medical device, academic, and contract research industries. StageBio represents the combined capabilities of the most well-respected sources of high-quality histology and histopathology services in the preclinical and clinical research and development market.	>60
<b>Charles River Laboratories</b>	For more than 75 years, Charles River has delivered solutions to accelerate the development of drugs, chemicals, and medical devices for the people and patients who need them. Their products and services support clients from basic research, discovery, and safety assessment, to manufacturing and commercialization.	>50
<b>Texcell North America</b>	For more than 30 years, Texcell has been providing state-of-the-art services to ensure the biosafety and security of their clients' products and processes. Specializing in viral testing, immunoprofiling, viral clearance, cell and gene therapy, viral vaccines, and GMP cell banking, Texcell is dedicated to supporting testing and research that improves the quality of life for individuals around the world.	>40
<b>RoosterBio</b>	An industrialized supply chain of high-quality hMSCs paired with productive bioprocess media and key process parameters can fuel hundreds of next-generation cell-based therapeutics on the horizon. RoosterBio utilizes their core products and expertise to help develop cell-based therapies with commercially viable biomanufacturing processes, right-sized to your needs.	>50



*Frederick County's Fast-Track Permit Process streamlined our ability to achieve various building permits and process subcontractor and trade permits as well as saved precious time by expediting these approvals. Frederick County clearly understands the challenges of bringing a complicated, fast-track project to market and worked side-by-side with the Coakley & Williams Construction team to ensure all stakeholders understood what was required to make the permit and inspection process a success.*

JASON SHAW, Senior Project Manager Kite Pharma



## RECENT ANNOUNCEMENTS

### **Theradaptive Expanding Global Clinical Trials**

Theradaptive, a market leader in targeted regenerative therapeutics, has received full ethics approval from the Bellberry Ethics Committee to commence its OASIS in-human study in Australia for its novel spinal fusion implant OsteoAdapt SP. Theradaptive can now enroll patients at each site in Australia listed with Bellberry as part of its global clinical study for OsteoAdapt SP, thus extending Theradaptive's OASIS trial already enrolling patients in the US.

Theradaptive CEO and founder Luis Alvarez, PhD, said "The decision by the Bellberry Ethics Committee represents a significant milestone for Theradaptive as it signals an acceleration of our transition to a clinical-stage organization and our ambitions for global expansion in order to bring OsteoAdapt SP to patients around the world. We are about to embark on a period of growth that will transform our operations here in Maryland and internationally and we are actively seeking the best talent in the industry to join our world-class team at this exciting time for Theradaptive."

### **Cartesian Therapeutics to Relocate Maryland Headquarters to Frederick**

The clinical-stage biotechnology company signed a lease for 20,000 square feet in a former office building that was converted to life science space, outfitting the property with lab space, cleanrooms, testing areas and wet labs. The move will provide the infrastructure necessary for the company to grow while remaining part of the I-270 Technology Corridor.

### **Lonza Expansion**

Lonza, a global partner to the pharmaceutical, biotech, and nutraceutical markets, celebrated the start of construction for the expansion of its endotoxin assay production facility in Walkersville on September 25, 2024. Lonza is renovating approximately 18,000 square feet of dedicated manufacturing space at the site to meet growing demand for endotoxin assay products.

### **BioFactura, Inc. Expansion**

Biofactura signed a lease for 12,000 square feet of space at Riverside Tech Park, a 70-acre business community in Frederick, MD. The biotechnology and life sciences group was awarded a \$78 million contract from the Biomedical Advanced Research and Development Authority (BARDA) for the advanced development of the company's Smallpox Biodefense Therapeutic. BioFactura's product has the potential to prepare, augment current countermeasures and guard against a possible smallpox breakout on a global scale. More than 50 engineers, scientists, biologic manufacturing specialists, regulatory compliance and quality control, and clinical trial professionals are expected to work in the new facility.

### **Precision Medicine Group Expansion**

Precision Medicine Group expanded in Frederick County, opening a new, state-of-the-art 40,000 sq ft laboratory. It will serve as a global center of excellence for gene therapy companion diagnostics, large molecule bioanalytical, immune monitoring, and cell biology assays. The company is also expanding its talent pool that works in advancing the development of life-changing therapies for some of the most innovative biotechs and pharmaceutical companies in the industry.

### **Frederick Innovative Technology Center, Inc. (FITCI) Expands**

With a 93% business success rate, FITCI is Frederick County's incubator and accelerator that specializes in the strategic business support of local entrepreneurs in the early stages of their journey. FITCI's expansion The Edge@321 is an evolved concept blending business development, economic resiliency and community collaboration into a centralized hub, doubling the number of startup companies supported.

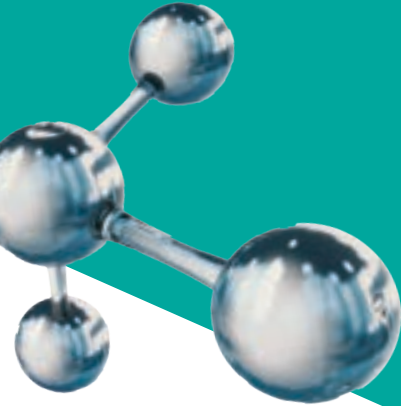
### **Kite and Arcellx Partnership**

Arcellx and Kite, a Gilead Company, formed a global strategic collaboration to co-develop and co-commercialize Arcellx's CART-ddBCMA candidate for the treatment of patients with relapsed or refractory multiple myeloma currently in a pivotal Phase 2 study. Kite and Arcellx will jointly advance and commercialize the CART-ddBCMA asset in Frederick County and Kite will commercialize the product outside the U.S.

# INCENTIVES

## INCREASE YOUR BOTTOM LINE IN FREDERICK COUNTY

*A competitive tax structure, business-friendly climate and attractive local and state incentives make Frederick County the ideal place to do business. Frederick County is one of just a few elite counties across the U.S. with a AAA bond rating from all three agencies, the highest bond rating possible. This helps translate the financial health and stability in Frederick County.*



**Fast Track Permitting** is an economic development tool used to expedite projects through the development process while adhering to all established standards. Applicants receive points based on criteria such as: job creation, target industry, capital investment, and average annual salaries.

**The County does not assess a business personal property tax.** This can provide considerable savings compared to other jurisdictions.

**The County exempts**

# 100%

of commercial and research and development inventory from personal property tax.

## QUALIFYING FOR TAX CREDITS

### New Jobs Tax Credit

Available for businesses who construct or expand by at least

# 5k sq/ft

in a priority funding area and create at least

# 25

**New Jobs**

within the first two years of expansion

### Enhanced Jobs Tax Credit

Available for businesses who expand by at least

# 250k sq/ft

and create at least

# 2.5k

**Full Time Jobs**

\*These tax credits are available for new construction only.

### 10-Year Real Property Tax Credit

Available for businesses conducting manufacturing, fabricating, or assembling operations with a total new investment of at least

# \$5M

and at least

# 25

**New Jobs**

paying at least

# 150%

**The Federal Minimum Wage**

Maryland's **Research and Development Tax Credit** program provides income tax credits to businesses that invest in research and development in Maryland.

**Maryland Biotechnology Investment Incentive Tax Credit** provides an investor with a refundable State income tax credit for an eligible investment in a Qualified Maryland Biotechnology Company (QMBC). The program supports investment in seed and early stage biotech companies to promote and grow the biotech industry in Maryland.

[DISCOVERFREDERICKMD.COM](http://DISCOVERFREDERICKMD.COM)

THE CITY OF FREDERICK  
LIFE SCIENCES PROFILE

JOIN THE  
**STORY**



**FREDERICK**  
JOIN THE STORY

The City of Frederick:  
Department of  
Economic  
Development

As the Northern anchor of the 270 Technology Corridor, the Frederick region is home to more than

**130** LIFE SCIENCE COMPANIES

The City of Frederick serves as the central hub of this booming life science cluster.



## MARYLAND'S SECOND LARGEST CITY


  
POPULATION  
**90,748**

 Port Resources

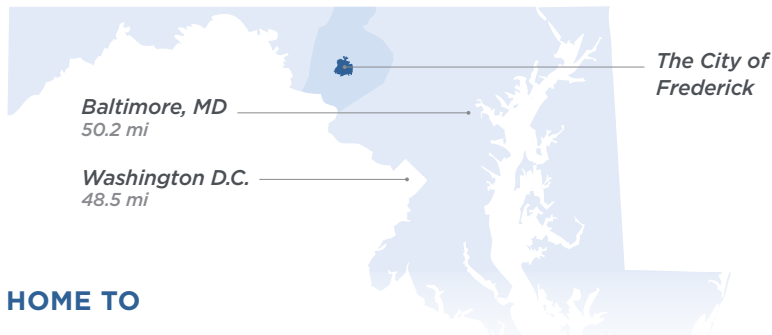
 3 International and 1 Local Airport

 Major Highways and Railways

 Federal Agencies

 World Leading Research Institutions

 Day's Drive From 1/3 of the US Population



### HOME TO

**Fort Detrick:** The U.S. Army Garrison, Fort Detrick, supports five cabinet level agencies and is a global leader in a broad range of medical research development and logistics initiatives. The base offers unique opportunities for technology transfer, contracts, and partnerships for businesses in the life science field.

**Frederick National Laboratories for Cancer Research:** NCI's Frederick National Laboratory for Cancer Research is the only Federally Funded Research and Development Center devoted exclusively to biomedical research. The lab works on the forefront of basic, translational, and clinical science.

**AstraZeneca:** AstraZeneca is a global pharmaceutical company that develops and manufactures life-changing medicines for patients around the world. The company's Frederick biologics manufacturing center is one of the largest in the world and hosts over 700 employees.

**Global Gateway Soft Landing Program:** Frederick County has established itself as a prominent location for international biotech companies. The region currently hosts a notable presence of soft landing companies within the biotech sector, including entities originating from Switzerland, Ireland, and Scotland.

### SKILLED WORKFORCE & EDUCATIONAL SYSTEM

Over 40% of The City of Frederick's workforce holds a bachelor's degree or higher.

The City hosts two of Frederick County's three higher educational institutes, which feature degrees and training partnerships in:

- Bioprocessing
- Biomedical Science
- Environmental Biology
- Chemistry & Biology
- Pre Med Studies

The Hood College Hodson Life Science Center offers a unique opportunity for students to receive specialized hands-on training coinciding with current industry needs.

The Biotech Bootcamp program, sponsored by local economic development partners, offers a free workforce development training opportunity that prepares participants for entry-level life science positions.



### FROM INCUBATION TO ACCELERATION

The Frederick Innovative Technology Center Inc. (FITCI), named one of the largest incubators and accelerators by the Baltimore Business Journal every year since 2017, offers biotech, agtech, high tech and life science entrepreneurs offices, wet labs and support services. A major expansion was recently completed in The City of Frederick to increase the 70+ member organization's capacity. The expansion project - 'The Edge at 321 Ballenger Center' - features 30,000 SF with 4,500 SF of community space with state-of-the-art conferencing equipment.





### A PLACE WHERE CULTURES CONNECT

*During the day, Frederick hosts an atmosphere of discovery and innovation as top researchers probe cultures in laboratories across the area. After the lab coats are hung up for the day, these individuals transition to exploring the diverse cultural experiences for which the city is nationally renowned.*

Frederick offers a high quality of life that supports both the attraction and retention of top talent, including:

-  A 275+ Year Old Historic Downtown
-  A variety of unique festivals
-  A vibrant arts & entertainment district
-  3 professional sports teams (baseball, basketball, soccer)
-  An award-winning food scene
-  75+ parks, and easy access to C&O Canal, Appalachian Trail, and Potomac River
-  10+ downtown craft beverage establishments

### NATIONAL RECOGNITION

- Top 100 Best Places to Live** | *Livability*
- Cooldest Towns to Visit** | *Matador Network*
- Best Run Cities in the U.S.** | *Stacker*
- Top American Downtowns** | *Matador Network*
- Top Areas for Growth Potential** | *Business Facilities*



**Life Sciences Companies**

Akonn Biosystems\*  
 Alithe Genomics\*  
 AstraZeneca\*  
 BioAssay Works  
 BioFactura\*  
 Bluepoint Bioscience  
 Britecyte  
 Cartesian Therapeutics  
 Charles River Laboratories\*  
 Columbia Biosciences  
 Denovo Biotechnology  
 DRI Biosciences Corporation  
 Emmes Corporation  
 Envigo-Inotiv  
 FiberCell Laboratories  
 GM Biosciences  
 Hydromax  
 HypOxygen  
 Imagilin Technology\*  
 Immunoprobe\*  
 ImQuest Biosciences  
 Indivumed  
 Jecho Laboratories  
 Kamtek  
 Kemp Proteins  
 Kite, a Gilead Company  
 Leidos Biomedical Research\*  
 Lifeline Cell Technology\*  
 Lonza  
 Medigen\*  
 Modavar Pharmaceuticals  
 Phycin\*  
 Poochon Scientific  
 Precision for Medicine\*  
 Qiagen  
 Rooster Bio  
 Royer Biomedical  
 SriSai BioPharmaceutical\*  
 StageBio\*  
 Syngene, a Division  
 of the Synoptics Group

**Life Sciences Companies Continued**

Texcell  
 Theradaptive  
 Thermo Fisher Scientific  
 Tonix Pharmaceuticals\*  
 Tox Path Specialists, a StageBio Company\*  
 Veralox Therapeutics  
 XpressBio  
 Zalgen Labs

**Medical Technology Companies**

Akonn Biosystems\*  
 Bioelectronics Corporation  
 CarrTech Corp.\*  
 CIAN Diagnostics  
 NanoBioFAB\*

**Startups**

Blue Sources  
 Blue Zone Bio  
 Cornerstone Genomics  
 DRI Biosciences  
 Forager Station  
 Harborgen  
 HBVTech  
 InnoVin LLC  
 Mygogenesis  
 Nanocrine  
 OspiezeyBio  
 Phycin  
 Potomac Affinity Proteins  
 ProNav Clinical  
 Psquare Scientific

**Life Sciences Supporting Services**

A2LA  
 Accuflow Systems  
 Afab Lab Resources\*  
 Allied Technologies & Consulting  
 American Association for Laboratory  
 BaneBio  
 Battelle Memorial Institute\*  
 BioStat Solutions - Cencora  
 BridgePath Scientific  
 Charles River Laboratories\*  
 Clym Environmental Services, LLC\*  
 DCM Bioservices\*  
 Eminent Services Corporation  
 Microbiology International  
 Nexus Discovery Advisors  
 Pace  
 Thermo Fisher  
 TOMI Environmental Solutions\*  
 US Pharmacopeia  
 Valogic\*

\*City of Frederick Business

List updated as of 4/11/2025.  
 Updates and additions may be  
 submitted to the City's Department  
 of Economic Development at  
[business@cityoffrederickmd.gov](mailto:business@cityoffrederickmd.gov).



**FREDERICK**  
 MARYLAND

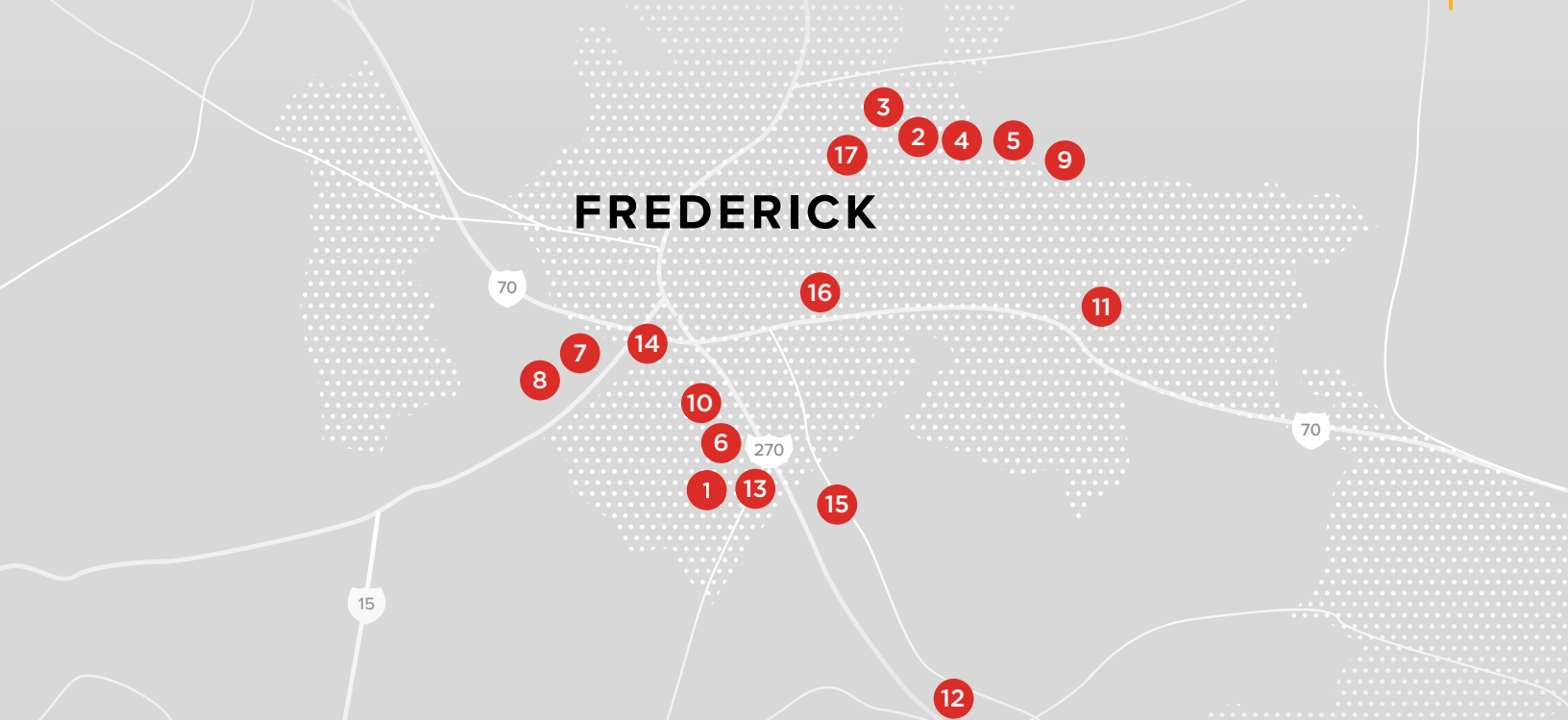
The City of Frederick: Department of Economic Development  
 301-600-6360 | [businessinfrederick.com](http://businessinfrederick.com)

LEARN MORE



*Frederick County has a current inventory of life sciences space for companies of all stages to succeed, including incubators, offices, research & development (R&D), laboratory space, manufacturing facilities, warehouse and distribution centers.*

This combination of available real estate and fast track permitting ensures the County has capacity to meet the needs of the expanding life sciences cluster in both space and time.



## BIO FOCUSED PROPERTIES

- |   |   |  |
|---|---|--|
| <p><b>1 Progress Labs Center 85 at Westview South</b><br/>Executive Court South<br/>Frederick</p> | <p><b>7 Lincoln West at Jefferson Station</b><br/>5981 Jefferson Station Court<br/>Frederick</p>    | <p><b>12 Urbana Northern MXD</b><br/>Urbana Town Center<br/>Frederick</p>                                |
| <p><b>2 Progress Labs at Riverside Research Park</b><br/>Progress Drive<br/>Frederick</p>         | <p><b>8 The Labs at Jefferson Technology Park</b><br/>Jefferson Station Boulevard<br/>Frederick</p> | <p><b>13 I-270 Innovation Labs</b><br/>5107 Pegasus Ct. Suite L<br/>Frederick</p>                        |
| <p><b>3 Progress Labs Riverside</b><br/>8480 Stage Coach Circle<br/>Frederick</p>                 | <p><b>9 Frederick Commerce Center</b><br/>8995-9062 Gas House Pike<br/>Frederick</p>                | <p><b>14 Ballenger Bio</b><br/>321 Ballenger Center Drive<br/>Frederick</p>                              |
| <p><b>4 Progress Labs Riverside I</b><br/>8484 Progress Drive<br/>Frederick</p>                   | <p><b>10 Elevate 270 Biotechnology Center</b><br/>7200 Bank Court<br/>Frederick</p>                 | <p><b>15 Frederick Corporate Park</b><br/>7445 Technology Way<br/>Frederick</p>                          |
| <p><b>5 Progress Labs Riverside II</b><br/>8560 Progress Drive<br/>Frederick</p>                  | <p><b>11 Frederick Airport Park</b><br/>Bowmans Farm Road<br/>Frederick</p>                         | <p><b>16 Frederick Exchange</b><br/>E South Street at<br/>Monocacy Blvd<br/>Frederick</p>                |
| <p><b>6 Westview Bio Park</b><br/>5255 Westview Drive<br/>Frederick</p>                           |   | <p><b>17 EastPark</b><br/>Monocacy Blvd, at E Church St.<br/>&amp; Schifferstadt Blvd.<br/>Frederick</p> |

# SKILLED WORKFORCE

## Frederick County is the fastest growing county in Maryland.

The County's rapid rate of growth corresponds to the rate of job growth as it outpaces both the Baltimore and Washington metropolitan areas and the State. Between 2025 and 2050, it is projected that the life sciences industry will be one of the top industries with the highest percentage of future growth. Frederick County's economy is robust and poised for continued growth, making it the premier location for businesses and job seekers alike.

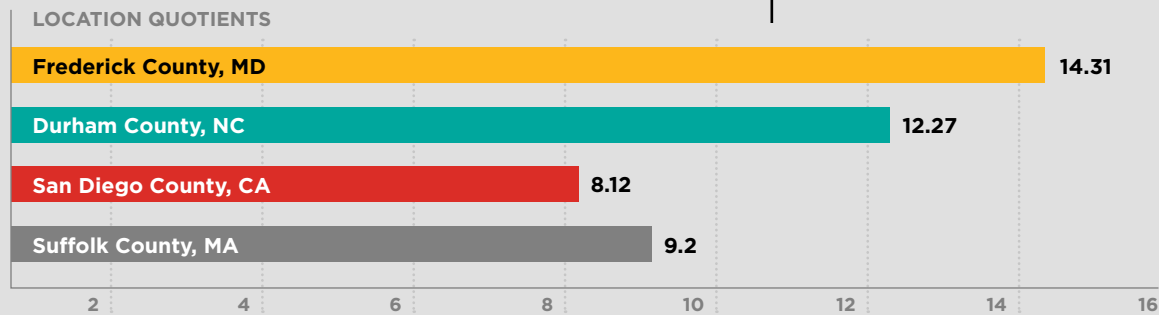
# 23%

## PROJECTED JOB GROWTH RATE

Between 2025 and 2050

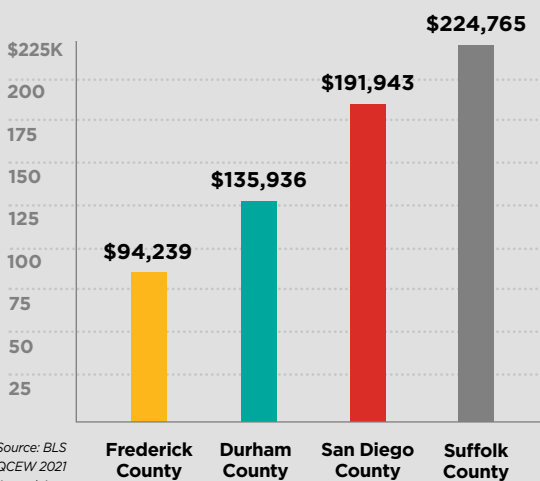
## Research and Development in Biotechnology

Frederick County has a larger employment concentration in research and development in biotechnology than the national average.



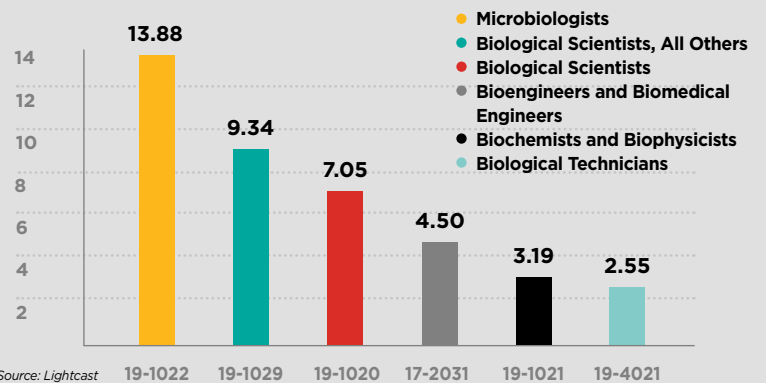
Source: BLS QCEW 2021 Annual Averages

## Average Wages Per Employee in Research and Development in Biotechnology



Source: BLS QCEW 2021 Annual Averages

## 2022 Employment Concentration



Source: Lightcast

Employment Concentration (also known as Location Quotient) quantifies the concentration of employed workers in a region relative to the national average. If an employment concentration is equal to 1, then the industry has the same share of its area employment as it does in the nation. An employment concentration above a 1 indicates a larger concentration of workforce than the national average.

# AREAS OF EXCELLENCE



## RESEARCH BUSINESSES AND ORGANIZATIONS

National Cancer Institute - Frederick  
Frederick National Laboratory for  
Cancer Research  
National Biodefense Analysis and  
Countermeasures Center  
National Center for Medical Intelligence  
National Institute of Allergy and  
Infectious Diseases - Frederick  
Telemedicine & Advanced Technology  
Research Center  
U.S. Army Medical Research and  
Materiel Command  
U.S. Army Medical Research Institute  
of Infectious Diseases  
U.S. Army Center of Environmental  
Health Research  
USDA Foreign Disease-Weed Science  
Research Unit  
Battelle  
Leidos Biomedical Research  
Medigen  
Jecho Laboratories  
Charles River Laboratories  
Texcell - North America



## BIO MANUFACTURING

Kite, a Gilead Company  
AstraZeneca  
Lonza  
Modavar Pharmaceuticals  
QIAGEN  
Thermo Fisher Scientific  
RoosterBio  
BioFactura

# EDUCATION

*Frederick County has high-quality, award-winning educational facilities and institutions that provide the business community with a highly educated workforce.*

Frederick County's labor force includes graduates from Frederick Community College, Hood College and Mount Saint Mary's University and renowned regional universities such as Johns Hopkins University and The University of Maryland.

## FREDERICK COUNTY PUBLIC SCHOOLS (FCPS)

Frederick County Public Schools (FCPS) serves more than 45,000 students in twelve municipalities. Frederick County continues to have one of the highest graduation rates in the State at 93.3% compared to Maryland's 91% average.



93.3%

of the population has a high school diploma.



43.6%

of the population has a bachelor's degree or higher.



19.1%

of the population has a graduate or professional degree.



# LOCAL LIFE SCIENCES PROGRAMS

## FREDERICK COMMUNITY COLLEGE

### Biotechnology (A.A.S.)

This program prepares individuals to work as process operators in biological products manufacturing facilities. Students will combine basic science and communication skills, manufacturing technologies and good manufacturing practices in the course of study. Students will develop a strong basic science foundation with a sound understanding of the major technologies employed in the industry. They will also develop collaborative and disciplined work ethics while consistently practicing problem-solving skills. Upon successful completion of the program, individuals will possess the necessary skills to qualify for employment in a variety of bioprocessing industries.

## PARTNER-BASED TRAINING OPPORTUNITIES

### Biotech Boot Camp

Biotech Boot Camp is a 4-week training program designed to help jobseekers gain the fundamental skills necessary to enter Frederick County's growing biotech industry. The program is intended for both first-time and experienced workers looking for a new career pathway. Following the successful completion of the course, program participants will be connected to local/regional biotech companies to seek job opportunities.

*This list represents a small sample of life sciences programs offered. A complete list of additional programming can be found on the corresponding institution's website.*

## HOOD COLLEGE

### Biomedical Science (M.S.)

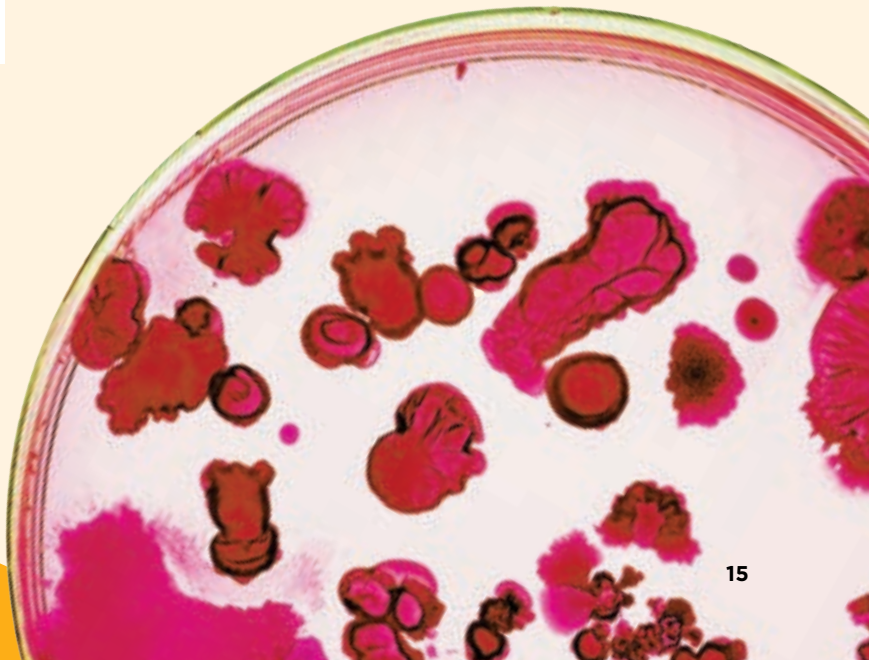
Tailored specifically to the demands of the region's growing hub of life sciences research employers, the program offers an alternative to conventional graduate education for those who work full time with courses that are taught in the evenings.

## MOUNT SAINT MARY'S UNIVERSITY

### Biotechnology Management Dual Degree Program (B.S. and M.S.)

### Biotechnology and Management (M.S.)

The dual degree program in biotechnology management is designed for students interested in careers in the biotechnology sector who want to bridge the gap between science and business. This five-year dual degree program provides a pathway to earning a Bachelor of Science in biology and/or biochemistry and a Master of Science in biotechnology management, allowing the student to apply their skills in the biotechnology industry in the areas of product development, project management, data analytics and regulatory affairs, among others.



# WHERE BIG IDEAS GROW

**HAVE QUESTIONS ABOUT THE  
LIFE SCIENCES INDUSTRY  
IN FREDERICK?**

**CONTACT US** 301-600-1058

118 N Market St, Suite 200 | Frederick, MD 21701  
fcoed@frederickcountymd.gov | [discoverfrederickmd.com](http://discoverfrederickmd.com)



**FREDERICK COUNTY MD**  
**Office of  
Economic  
Development**